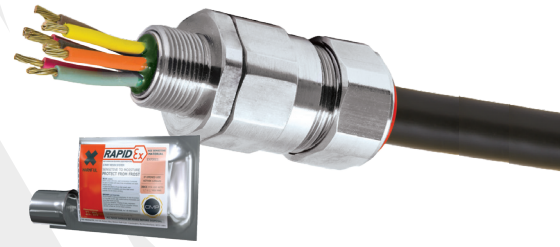








# PX2KPBREX

**PX2KPBREX INTERNATIONALLY APPROVED, EXPLOSIVE ATMOSPHERE RAPIDEX BARRIER CABLE GLAND**

**FOR ALL TYPES OF LEAD SHEATHED ARMoured CABLES**

- Effectively earths / grounds lead sheathed cables
- RapidEx liquid pour sealing system reduces installation time
- Metal-to-metal armour clamping
- Direct and remote installation
- Integral protected deluge seal
- Controlled outer load retention seal
- Unique OSTG prevents overtightening
- 60°C to +85°C
- Internationally marked, UKEX, IECEX and ATEX
- Superior EMC performance
- RapidEx liquid barrier resin seals around internal cable cores after removing any cable inner sheath/bedding; completely eliminating any risk of coldflow



 <b>IP66</b>	 <b>IP67</b>	 <b>IP68</b>
 <b>DELUGE PROTECTED</b>	 <b>EMC</b>	 <b>+85 °C</b> <b>-60 °C</b>

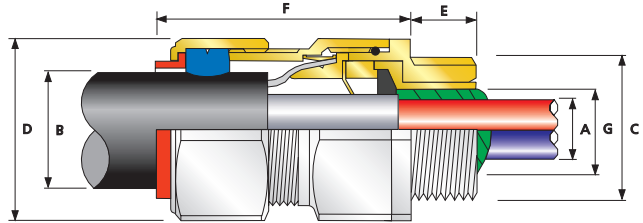
<b>Ex db</b>	<b>Ex eb</b>	<b>Ex ta</b>	<b>Ex nR</b>
--------------	--------------	--------------	--------------

TECHNICAL CLASSIFICATION	
DESIGN SPECIFICATION	BS 6121:Part 1:1989, IEC 62444, EN 62444
MECHANICAL CLASSIFICATION*	Impact = Level 8, Cable Anchorage = Type D
ENCLOSURE PROTECTION	IK10 to IEC 62262 (20 joules) Brass and Stainless Steel only
ELECTRICAL CLASSIFICATION*	Category B (Category A when used with braid, tape or pliable wire armour cables)
INGRESS PROTECTION RATING**	IP66, IP67 and IP68***
DELUGE PROTECTION COMPLIANCE	DTS01:91
CABLE TYPE	Lead Sheathed and Single Wire Armour (LC/SWA), Lead Sheathed and Aluminium Wire Armour (LC/AWA), Lead Sheathed and Wire Braid Armour (LC/SWB), Lead Sheathed and Pliable Wire Armour (LC/PWA), Lead Sheathed and Steel Tape Armour (LC/STA), Lead Sheathed and Aluminium Strip Armour (LC/ASA)
ARMOUR CLAMPING	Detachable Compound Tube / Cone and AnyWay Universal Clamping Ring
SEAL MATERIAL	CMP SOLO LSF Halogen Free Thermoset Elastomer / RapidEx Barrier Compound
SEALING TECHNIQUE	CMP Outer Displacement Seal and Inner RapidEx Barrier Seal
SEALING AREA(S)	Inner Compound Barrier and Outer Sheath
CABLE GLAND MATERIAL	Brass, Electroless Nickel Plated Brass, Stainless Steel, Aluminium

\* Mechanical and Electrical Classifications applied as per IEC 62444 and EN 62444 \*\* When CMP installation accessories are used. Refer to [www.cmp-products.com](http://www.cmp-products.com) for further information.  
\*\*\* IP68 tested to a minimum depth of 30 metres for 12 hours, alternative depths / durations can be provided upon request

PATENT GRANTED: ES 2287986, NO 2287986, TR 2287986, AU 2010284848, AU 2014274614, GB 2485114, SG 178839, US 8872027, US 9484133, US 9774178, MY 153846, US 10193321, US1034078

GLOBAL PRODUCT CERTIFICATION			
ATEX CERTIFICATE	CML18ATEX1325X, CML18ATEX4317X	IECEX CERTIFICATE	IECEX CML 18.0182X
UKEX CERTIFICATE	CML 21UKEX1214X, CML 21UKEX4215X		
CODE OF PROTECTION	⊕ II 2G 1D, Ex db IIC Gb, Ex eb IIC Gb, Ex ta IIIC Da, ⊕ II 3G Ex nR IIC Gc, ⊕ I M2 Ex db I Mb, Ex eb I Mb	CODE OF PROTECTION	Ex db IIC Gb, Ex eb IIC Gb, Ex nR IIC Gc, Ex ta IIIC Da, Ex db I Mb, Ex eb I Mb
COMPLIANCE STANDARDS	EN 60079-0,1,7,15,31 UKrSEPRO CLQ 19.0371X	COMPLIANCE STANDARDS	IEC 60079-0,1,7,15,31
RETIE APPROVAL NUMBER	03866	CCOE / PESO (INDIA) CERTIFICATE	P444949
CCC CERTIFICATE	2020322313003190	INMETRO APPROVAL	TUV 12.2073X
MARINE APPROVALS	LRS: 01/00172 DNV: TAE000000Y ABS: 20-LD1948801-PDA, BV: 43180		



\* Grooved Cone (X) is predominantly used for Wire Braid (e.g. GSWB, TCWB), Steel Tape Armour (STA, DSTA) and Aluminium Strip Armour (ASA) but is also suitable for Single Wire Armour (SWA), Aluminium Wire Armour (AWA) and Pliable Wire Armour (PWA) if the range is outside that of the Stepped Cone (W). Grooved Cone (X) dimensions shown in the Cable Gland Selection Table below are for a double wire strand of braid armour cables. Tapes can also be doubled over. For cables that have only a single layer of armour such as SWA the clamping range should be used as shown in the table below. Stepped (W) Cone is suitable for Single Wire Armour (SWA), or Aluminium Wire Armour (AWA) cables.

COMBINED ORDERING REFERENCE (*BRASS METRIC)			AVAILABLE ENTRY THREADS 'C' (ALTERNATIVE METRIC THREAD LENGTHS AVAILABLE)					NUMBER OF CORES	DIAMETER OVER CONDUCTORS 'A'	LEAD SHEATH DIAMETER 'G'		OVERALL CABLE DIAMETER 'B'		ARMOUR RANGE †				ACROSS FLATS 'D'	ACROSS CORNERS 'D'	PROTRUSION LENGTH 'F'	SHROUD	CABLE GLAND WEIGHT (kg)
			STANDARD		OPTION									GROOVED CONE (X)		STEPPED CONE (W)						
			METRIC	THREAD LENGTH (METRIC 'E')	NPT	THREAD LENGTH (NPT) 'E'	NPT							MIN	MAX	MIN	MAX					
20S16	PX2KPBREX	1RA	M20	15.0	1/2"	19.9	3/4"	21	7.8	3.1	7.8	6.1	13.1	0.3	1.0	0.8	1.25	30.5	33.6	62.0	PVC06	0.25
20S	PX2KPBREX	1RA	M20	15.0	1/2"	19.9	3/4"	21	11.0	6.1	11.0	9.5	15.9	0.3	1.0	0.8	1.25	30.5	33.6	62.0	PVC06	0.23
20	PX2KPBREX	1RA	M20	15.0	1/2"	19.9	3/4"	21	12.6	6.5	13.4	12.5	20.9	0.4	1.0	0.8	1.25	30.5	33.6	63.0	PVC06	0.24
25S	PX2KPBREX	1RA	M25	15.0	3/4"	20.2	1"	30	17.5	11.1	19.3	14.0	22.0	0.4	1.2	1.25	1.6	37.5	41.3	69.5	PVC09	0.37
25	PX2KPBREX	1RA	M25	15.0	3/4"	20.2	1"	30	17.5	11.1	19.3	18.2	26.2	0.4	1.2	1.25	1.6	37.5	41.3	69.5	PVC09	0.37
32	PX2KPBREX	1RA	M32	15.0	1"	25.0	1 1/4"	50	23.6	17.0	25.5	23.7	33.9	0.4	1.2	1.6	2.0	46.0	50.6	75.0	PVC11	0.57
40	PX2KPBREX	1RA	M40	15.0	1 1/4"	25.6	1 1/2"	59	30.0	22.0	31.2	27.9	40.4	0.4	1.6	1.6	2.0	55.0	60.5	75.0	PVC15	0.80
50S	PX2KPBREX	1RA	M50	15.0	1 1/2"	26.1	2"	89	36.6	29.5	37.2	35.2	46.7	0.4	1.6	2.0	2.5	60.0	66.0	77.0	PVC18	0.90
50	PX2KPBREX	1RA	M50	15.0	2"	26.9	2 1/2"	89	41.0	35.6	42.6	40.4	53.0	0.6	1.6	2.0	2.5	70.0	77.0	77.0	PVC21	1.19
63S	PX2KPBREX	1RA	M63	15.0	2"	26.9	2 1/2"	115	47.9	40.1	48.5	45.6	59.4	0.6	1.6	2.0	2.5	75.0	82.5	79.7	PVC23	1.41
63	PX2KPBREX	1RA	M63	15.0	2 1/2"	39.9	3"	115	53.7	47.2	54.2	54.6	65.8	0.6	1.6	2.0	2.5	80.0	88.0	80.3	PVC25	1.44
75S	PX2KPBREX	1RA	M75	15.0	2 1/2"	39.9	3"	140	59.9	52.8	60.2	59.0	72.0	0.6	1.6	2.0	2.5	90.0	99.0	86.8	PVC28	2.13
75	PX2KPBREX	1RA	M75	15.0	3"	41.5	3 1/2"	140	64.2	59.1	65.2	66.7	78.4	0.6	1.6	2.5	3.0	100.0	110.0	88.3	PVC30	2.57
90	PX2KPBREX	1RA	M90	20.0	3 1/2"	42.8	4"	140	75.3	66.6	77.1	76.2	90.3	0.8	1.6	3.15	4.0	115.0	126.5	102.1	PVC32	3.71
100	PX2KPBREX	1RA	M100	20.0	3 1/2"	42.8	4"	200	83.6	76.0	88.1	86.1	101.4	0.8	1.6	3.15	4.0	127.0	139.7	114.0	LSF33	4.87

† For material options add the following suffix to the ordering reference; Brass (no suffix required); Nickel Plated Brass '5'; 316 Grade Stainless Steel '4'; Copper Free Aluminium '1'  
For NPT options add the following digits to the material suffix; 1/2" = 31; 3/4" = 32; 1" = 33; 1 1/4" = 34; 1 1/2" = 35; 2" = 36; 2 1/2" = 37; 3" = 38; 3 1/2" = 39; 4" = 310 (Brass requires prefix '0')

Examples: 32PX2KPBREX1RA534 = Nickel Plated Brass 1 1/4" NPT, 50SPX2KPBREX1RA035 = Brass 1 1/2" NPT, 25PX2KPBREX1RA432 = Stainless Steel 3/4" NPT, 20PX2KPBREX1RA5 = Nickel Plated Brass M20  
Dimensions are displayed in millimetres unless otherwise stated

Dimensions listed are for metric cable glands only. Dimensions for alternative threads may vary, please see supplementary technical data sheet.